

STANDARD FIXING FOR PRO & PRO XL KEY SAFES



INSTALLATION INSTRUCTIONS



STANDARD FIXING FOR PRO & PRO XL KEY SAFES

INSTALLATION INSTRUCTIONS

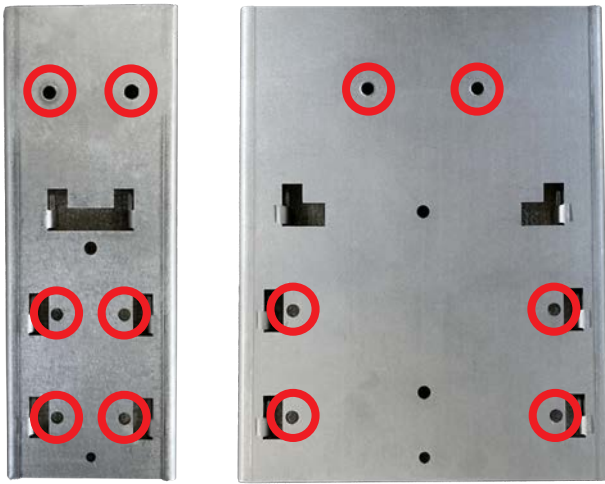
Masonry, concrete, steel or other suitable solid substrate

The bracket must be installed onto a clear, **FLAT** surface.

The bracket must **NOT** be mishaped when fixed in place as this could impede the operation of the key safe.

When you locate your bracket position you will require a minimum clearance of 20mm above the bracket and 120mm below the bracket for drawer opening.

Figure 1



Figures 2 & 3



Figures 4 & 5



STEP 1

Using the bracket as a template, mark the 6 fixing holes on the surface (see figure 1).

STEP 2

For masonry or concrete use a size 6 drill pilot hole in each of the locations marked. For Steel use suitable self tapping fixings.

Ensure that the holes are drilled to depth of at least 72mm.

Note: If the hole is not deep enough it will impede fixing and removal

STEP 3

Fix the bracket to the wall using the required fixings. Note: The top 2 fixing holes on the bracket are countersunk. The screw heads must **NOT** protrude from these holes.

STEP 4

Using your code, open the drawer on the key safe.

With the bracket now secured, push the key safe onto the bracket runners and drop down into place. To line the runners up the key safe will need to be approximately 20mm higher than the top of the bracket (figures 2 & 3).

STEP 5

Using a 2.5mm long handle hex/allen key or T-bar locate the hole on the front of the key safe (see figure 4 & 5).

Move the drawer up until the allen key locates through the second hole and into the grub screw (see figures 4 & 5).

Tighten the grub screw to secure the key safe onto the bracket.

Ensure the grub screw is not overtightened, it should not be hard to turn.

The product is supplied with:

Bespoke FF Pro fixing Bracket

6 x 7.5x62mm concrete fixing screws

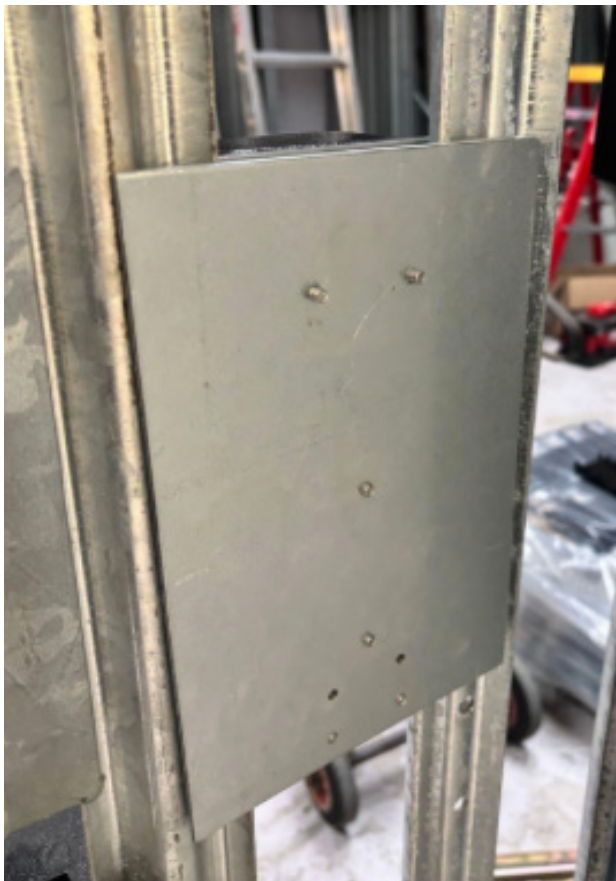
Depending on the required fixing you may need the following tools for installation:

Drill/driver

Size 6 masonry drill bit

T30 hex bit

Self tapping countersunk screws



Custom Gate and V-Mesh fixing plates

The Gate/V-Mesh Fixing Plates for Face Fix Key Safe and the Face Fix Pro Key Safe are specialised mounting plates designed for secure installation on various types of gate and fencing systems. They are particularly suited for systems such as bars, palisade fences, wire mesh, and V-mesh fencing. These fixing plates are fabricated from 3mm Nirosta, a type of stainless steel known for its anti-rust properties, ensuring durability in outdoor environments.

Key Features:

Material: 3mm thick Nirosta stainless steel, providing corrosion resistance and long-lasting performance.

Versatile Use: Suitable for a variety of fencing types, including bars, palisade fences, wire mesh, and V-mesh systems.

Pre-threaded Fixings: The plates come with M5 pre-threaded fixings, allowing for easy installation of a key safe.

Face Fixing: Designed specifically for face fixing, providing a secure and straightforward method to mount key safes or other items directly to the gate or fence structure.

This product offers a robust solution for securely attaching key safes to outdoor gate and fencing systems, ensuring protection against the elements while maintaining ease of access.

The Key Safe bracket will be pre-installed on the fixing plates.

STEP 1

Loosen the bolts on the plate until the back plate is free.

STEP 2

Place the back plate (the plate with threaded holes) on the inside of the fence and hold in position.

STEP 3

Take one of the provided bolts and push it through the key safe bracket and then the front plate.

Match the bolt up with the threaded holes on the back and tighten.

Repeat for all 6 bolts

STEP 4

Once the fixing plate is secure, open the key safe and slide it onto the bracket as shown above.

For technical assistance contact your supplier or Loxal Security on 08009172994

